

## The State Savings Bank of Victoria

Guaranteed by the Government of Victoria.

### ONE SHILLING

There are now over 880,000 depositors, with balances amounting to THIRTY-EIGHT MILLION POUNDS.

INTEREST at 4 PER CENT.

allowed on sums from £1 to £500, and on Deposit Stock in sums from £10 to £1000, in addition to the ordinary account up to £500.

### CREDIT FONCIER LOANS

on Houses and Shops, in sums from £50 to £1000, up to two-thirds of valuation (Returned Soldiers, up to three-fourths of valuation). Repayable by instalments spread over a term of years.

Write to the Inspector-General for full Particulars.

Head Office, State Savings Bank, Elizabeth St., Melbourne.  
GEO. E. EMERY, Inspector General.

## THE LONDON & LANCASHIRE INSURANCE CO. LTD.

400-402 Collins Street, Melbourne.

SECURITY TO POLICY HOLDERS: £9,340,730

FIRE INSURANCE OF EVERY DESCRIPTION.  
MARINE INSURANCE EFFECTED AT LOWEST RATES.  
ACCIDENT BUSINESS in all its branches, including Personal Accident and Disease. Employers' Liability, Workers' Compensation, Fidelity Guarantee, Burglary and Live Stock.

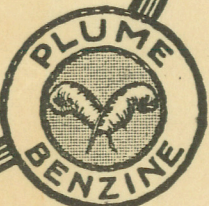
B. FINNIGAN, Manager.

## PLUME BENZINE

Whatever the Road You Travel  
Plume Benzine

will give you all the Power you need. Plume is used by thousands of satisfied motorists, by Government Flying-men, Fire Brigades, Government Departments, and large users of Benzine throughout Victoria. Just ask for Plume.

Vacuum Oil Company  
Pty. Ltd.



## MITCHELL'S WINES

Meet the Demand for QUALITY  
NOT

The Competition of mere PRICE.  
'Phone - Hawthorn 336.

## Commonwealth Bank of Australia

HEAD OFFICE, SYDNEY. Estab. 1912

MELBOURNE Equitable Building, Collins St. (General and Savings)  
OFFICES: Collins House, Collins St. (War Loan Department)

All Classes of General and Savings Bank Business undertaken

### GENERAL BANKING DEPARTMENT

In the principal Cities and Towns of Australia, Rabaul (New Britain), and London (2).

### SAVINGS BANK DEPARTMENT

at all Branches, and at 2782 Post Office Agencies in Australia, Papua, New Britain, Solomon Islands and The Pacific.

DENISON MILLER, Governor.



## NORTHCOTE



### REFERENCE

Railways and Stations	...	shown thus	—
Cable Tramways	...	"	—
Horse Tramways	...	"	—
Electric Tramways	...	"	—
Proposed Electric Tramway Extensions	...	"	—
Municipal Boundaries	...	"	—
Boundaries of Districts within Municipalities	...	"	—
Boundaries of Melb. & Metro Board of Works Area	...	"	—
Radii - 1/4 Mile each - from all Stations	...	"	—
State Savings Banks	...	"	—
Post Offices & Commonwealth Savings Banks	...	"	—
Metropolitan Gas Company Depôts	...	"	—
Town & Shire Halls	...	"	—
Bowling Greens	...	"	—
Telegraph Offices	...	"	—
Fire Stations	...	"	—
Police Stations	...	"	—
Numbers at Street Intersections indicate House Numbers	...	"	—

GREATER  
MELBOURNE  
MAPS

SCALE—8 inches to the Mile.

Municipality of

## Collingwood

AREA ... 1139 Acres  
POPULATION ... 34,876  
RATEABLE VALUE £325,502

ANDERSON, GOWAN PTY. LTD.,  
Printers and Publishers,  
552-4 Lonsdale Street, Melbourne

## The Metropolitan Gas Co.

Orders taken and Full Information given on all

### Modern Gas Appliances

Suburban Depots  
(Situated as indicated on Map)

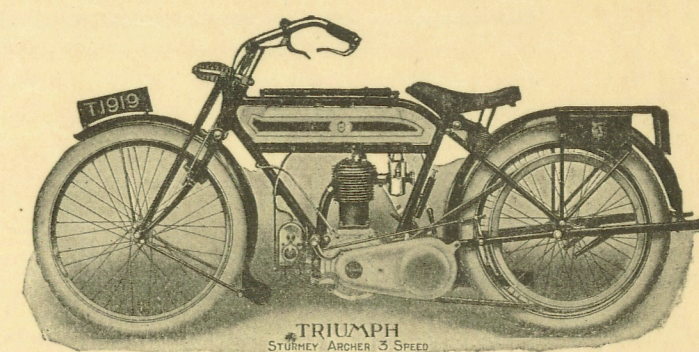
HEAD OFFICE and SHOWROOM  
196 Flinders Street.

## DARLEY FIRE BRICKS AND FIRE LUMPS

ARE THE BEST. 'Phone 5726



## TRIUMPH and A.J.S. MOTOR CYCLES

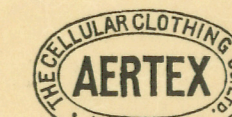


## MILLEDGE BROS.

287, 289 ELIZABETH ST. (opp. St. Francis' Cathedral), MELBOURNE.

Enquiries answered with pleasure.

**BRINDS GIN — 6°**  
A Superbly Mellow Spirit  
as Good as  
**BRINDS WHISKY**  
AT ALL HOTELS



THIS LABEL  
ON ALL  
GARMENTS

## AERTEX Cellular Clothing

For HEALTH and COMFORT

Obtainable at all Leading Stores

TELEPHONES 6842 AND 4740

## Anderson, Gowan

PTY. LTD.

### ART PRINTERS

Publishers, Bookbinders  
Stationers

552-4 LONSDALE ST., MELBOURNE

STATIONERY BRANCH  
108 QUEEN STREET, MELBOURNE

### BARNET GLASS

"There and Back"

## BOOMERANG TYRES

Thousands of Australian Motorists have freely acknowledged the "Boomerang" pattern superior to any other make, because no matter what the nature of the roads, skidding is arrested wherever the wheels tend to produce less suction—and on wet roads the mud does not clog up the grooves and eliminate their anti-skidding qualities as is the case with many other fancy and so-called non-skid tyres, but as the wheels revolve the mud is cork-screwed out, and every "Boomerang" does its work.

"Boomerang"—The "There and Back" Tyre. Miles Cheaper and Australian.

BARNET GLASS RUBBER CO. LTD.

Founders of the Rubber Industry in Australasia.

Melbourne, Sydney, Adelaide, Brisbane, Perth, Hobart, Launceston, Christchurch.

## USE EMU BRAND CEMENT LILYDALE LIME

Most Economical and Cheapest.

ALL TIMBER YARDS. Or 'Phone 5726

## X.L. Lubricating Oils and Greases

excel all others.  
For Steam, Gas, Oil, and Electric Motor Power, etc.  
EFFICIENCY AND ECONOMY GUARANTEED.

Ask for X.L. Motor Oils—A, B, BB & E Grades

Graphite Gear Greases. Garlock Packings and Jointings.

RAMSAY & TREGANOWAN

Tels. 6727, 11296.

475-7 Latrobe Street, Melbourne.